

## DIGITAL MIXER

## D-901

### [Updating Firmware from Version 1.xx to Version 2.0]

Download the software program D901PCv200E\_f200.exe from our website <http://www.toa-products.com/international>. Then, install it to a personal computer referring to the D-901 PC SOFTWARE instruction manual also presented on our website.

To update the D-901's firmware, use the D-901 Firmware Update Utility program simultaneously installed with the D-901 PC Software.

Follow the procedure for the firmware update below.

After updating the firmware, use the latest D-901 instruction manual that can also be downloaded from our website.

**Step 1.** Connect both RS-232C ports of the D-901 and the PC using a 9-pin straight cable (male-to-female cord).

**Step 2.** Make RS-232C port settings at the D-901.

Set the control mode to "NONE\* " and the transmission rate to "115200 bps."

\* Has been changed to "UPDATE" on the version 2.00 or later firmware.

**2-1.** Press the UTILITY key on the D-901's front panel.

The Stereo Link setting screen is displayed.



**2-2.** Press the ▼ shift key several times until the RS-232C port setting screen is displayed.

The number of key depressions depends on the D-901's module configuration.



**2-3.** Rotate the Setting knob to set the Control mode to "NONE."



**2-4.** Press the ► shift key to display the setting screen of the RS-232C port transmission rate.

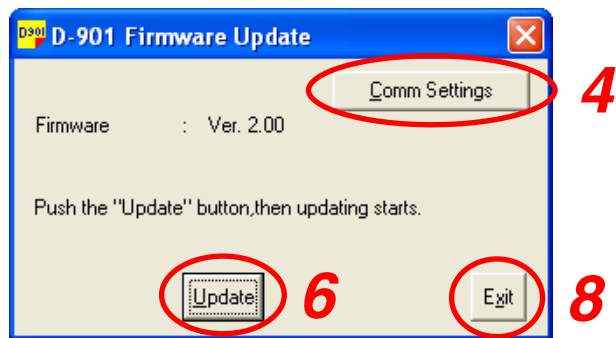


**2-5.** Rotate the Setting knob to set the transmission rate to "115200 bps."



**Step 3.** Select the menu items [Start → Program → TOA Digital Audio Control → Update D-901 Firmware] on the PC.

The D-901 Firmware Update screen appears.



The default communication settings are as follows:

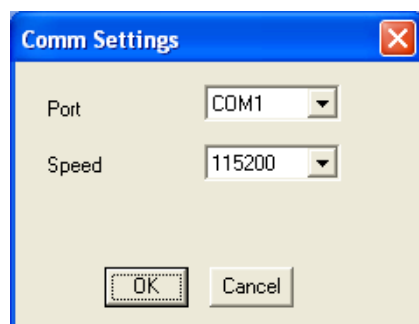
Communication port: COM 1

Baud rate: 115200 bps

To change the settings, follow **Step 4**. Unless otherwise necessary, go to **Step 6**.

**Step 4.** Click the [Comm Settings] button.

The Comm Settings screen appears.

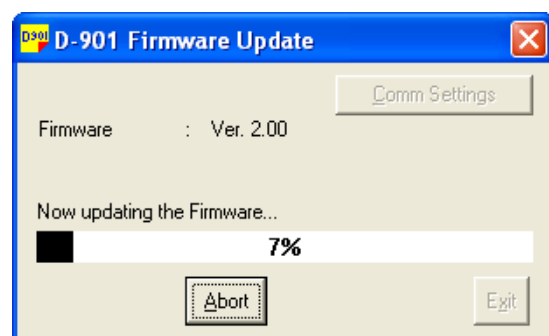


**Step 5.** Set the PC's Com port the D-901 is connected to, and the Speed (baud rate) equal to the D-901's RS-232C transmission rate.

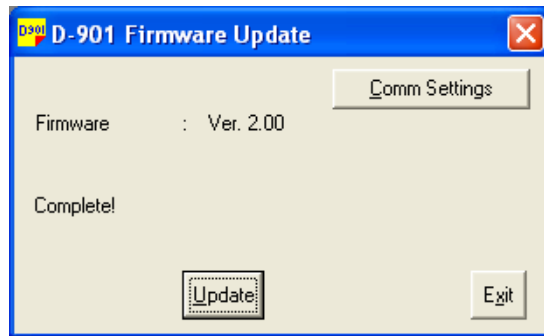
Click [OK], then the Comm Settings screen closes.

**Step 6.** Click the [Update] button of the D-901 Firmware Update screen.

The firmware update starts being transferred from the PC to the D-901.



The following screen appears after the update ends.



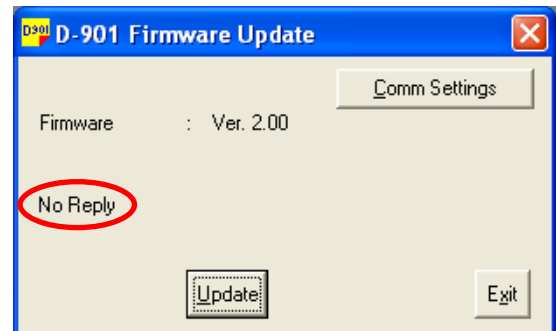
**[If "No Reply" is displayed]**

If the screen on the right appears after clicking the [Update] button, confirm the following:

- RS-232C cable specification and connection  
Check that 9-pin straight cable is used.
- RS-232C settings at the D-901 (**Step 2**)  
Check that the control mode is set to "NONE."
- PC communication settings (**Step 4**)

After confirming all the above items, follow the procedure from **Step 3** again.

If the same "No Reply" indication still appears in this **Step 6**, turn the D-901's power off, and on again. Then, follow the steps again from the beginning.



**Step 7.** Turn the D-901's power off, and on again.

Confirm the firmware version number that appears on the LCD screen at the unit's power-on. When the new version number is indicated, update has been completed correctly.

```
TOA D-901 Series
Software Ver 2.00
```

Using the Utility key can also indicate the firmware version number on the LCD screen.

```
[UTY] ► VERSION ▲
      2.00.001
```

**[If an error indication appears on the D-901's LCD screen]** (See the screens below.)

Click the Update button of the D-901 firmware update screen, and "Complete!" is displayed on its screen. Then, the error indication disappears.

After confirming its disappearance, restart the procedure from **Step 2** without turning the D-901's power off.

```
<<SYSTEM ERROR>>
TYPE : ff00
```

or

```
<<SYSTEM ERROR>>
TYPE : ff01
```

**Step 8.** Click the [Exit] button to end the firmware update.

